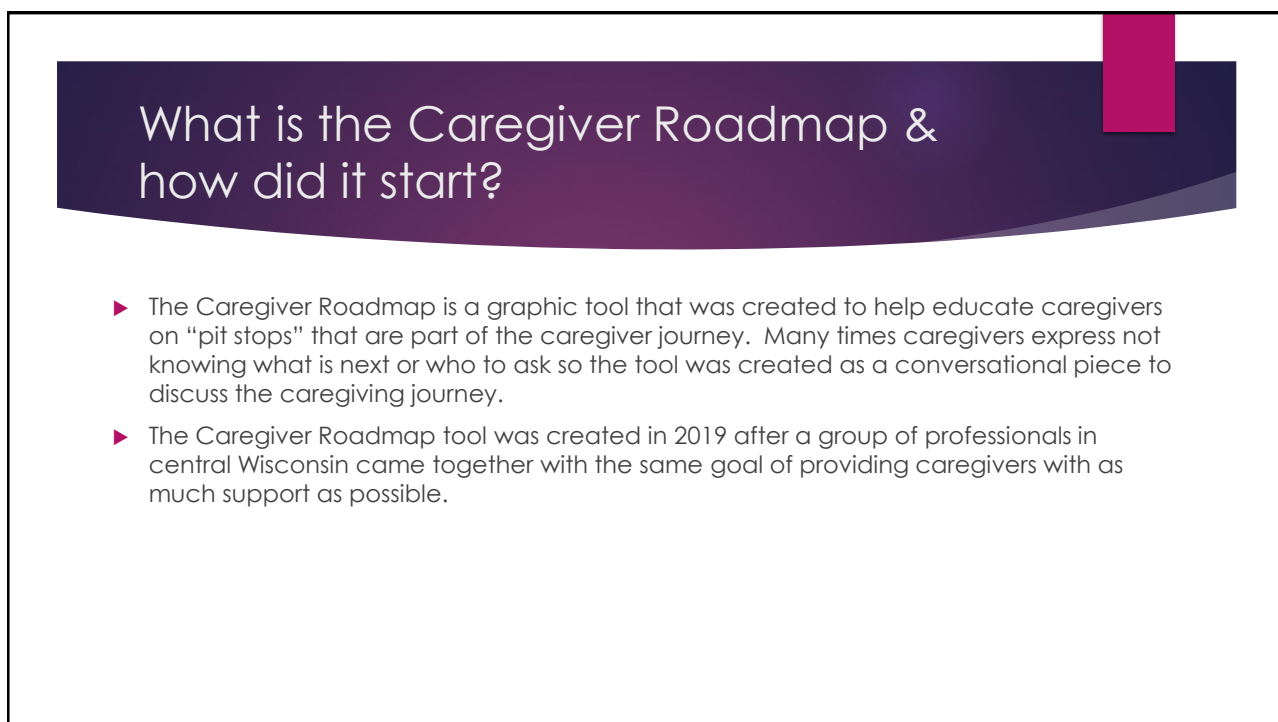
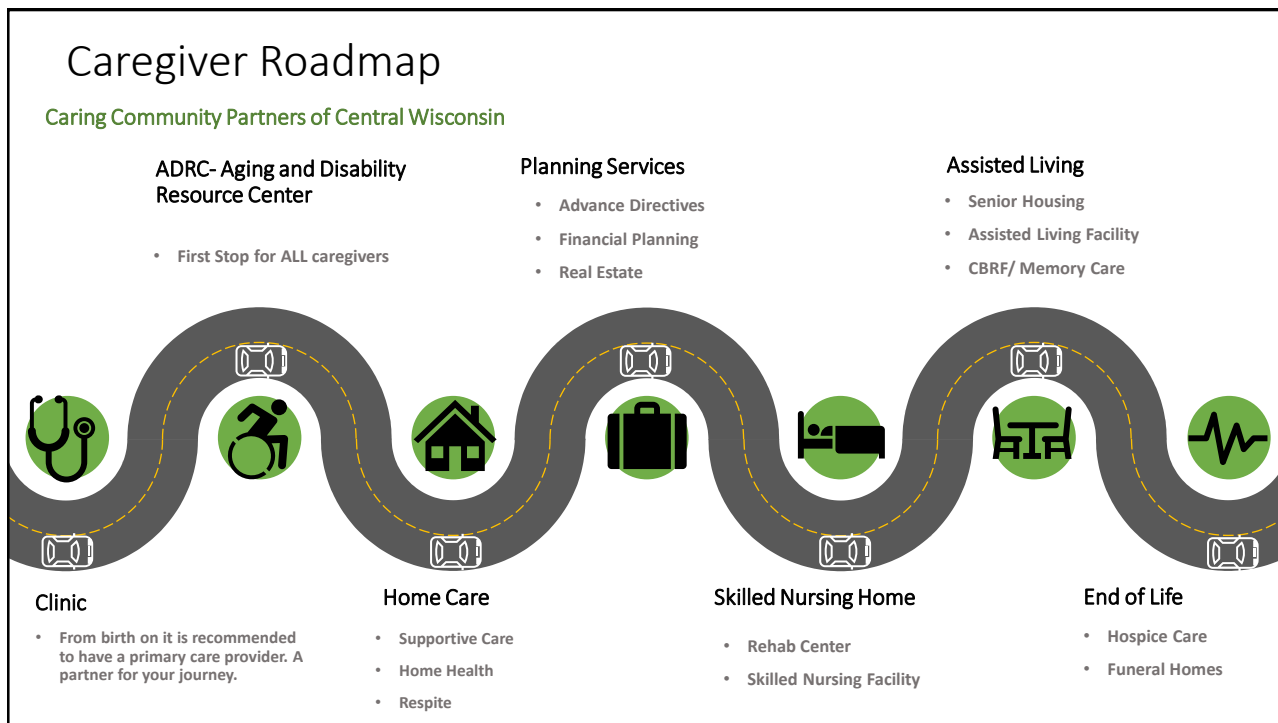


1



2



3

- **Clinic**
 - **Primary Care-** Research has shown that patients who have a primary care provider benefit from better management of chronic diseases, lower overall health-costs, and a higher level of satisfaction with their care.
- **ADRC**
 - **Aging and Disability Resource Center-** The first place to get accurate, unbiased information on all aspects of life related to aging or living with a disability. www.dhs.wisconsin.gov/adrc
- **Home Care**
 - **Supportive Care-** Care provided to elderly and disabled persons residing in their own homes: consists of assistance with daily living needs, including household care and personal care. Private pay, long-term care insurance, or Medicaid funded.
 - **Home Health-** Skilled care provided by or under the supervision of a qualified professional such as registered nurse, physical, occupational, or speech therapist.- Medicare, Medicaid, or Private Insurance funded
 - **Respite Care-** available in many different settings including both inpatient and outpatient. Ask for more information on options.
- **Planning Services**
 - **Advanced directives-** Written statement of a person's wishes regarding medical treatment
 - **Financial Planning-** Long-term financial planning is important for the security of the caregiver and the person with chronic illness
 - **Estate Planning-** For most families a home is their most valuable asset, both financially and emotionally. Having a plan can save unexpected costs and legal fees.
 - **Real Estate-** meeting with a real estate agent can help you in determining the value of your home and how to get the most out of that investment.
- **Skilled Nursing Facilities**
 - **Inpatient Rehab Center-** Provide specialized medical care and therapies to injured, sick, or disabled patients. Short-term stays
 - **Skilled Nursing Facilities-** Seek to provide a permanent home for elderly people in need of skilled care.
- **Assisted Living**
 - **Senior Housing-** Independent living- any housing arrangement designed exclusively for seniors.
 - **Assisted Living Facility-** Option for seniors who want or need help with activities of daily living- cooking, bathing, and transportation
 - **CBRF-** Higher level of care than the assisted living facility; can provide up to 3 hours of nursing care a week.
- **End of Life**
 - **Hospice-** Specialized type of care for those facing a life-limiting illness, their families, and their caregivers
 - **Funeral Homes-** Help establish the location, dates, and times of wakes, memorial services, and burials

4



5

Clinic-Primary Care Providers

Clinic

- ▶ From birth on it is recommended to have a primary care provider; A partner for your journey.
- ▶ Can provide referrals as needed/requested

6

ADRC- Aging and Disability Resource Center

ADRC- Aging and Disability Resource Center

- First Stop for ALL caregivers




- ▶ First stop for all caregivers-one stop shop
- ▶ Benefits for seniors and adults with disabilities
- ▶ Community resources
- ▶ Caregiver support and education
- ▶ Classes for healthy living
- ▶ Meals for seniors
- ▶ Equipment lending
- ▶ Volunteer opportunities



7

Home Care

- ▶ Supportive Home Care
 - ▶ Assistance with activities of daily living (ADLs) – usually a non-medical service
- ▶ Home Health
 - ▶ Includes Skilled Nursing, Physical Therapy, Occupational Therapy, Speech
- ▶ Respite Care
 - ▶ Can be provided in many different care settings
 - ▶ Inpatient: skilled nursing facilities, assisted living
 - ▶ Outpatient: adult day centers, in home support



Home Care

- Supportive Care
- Home Health
- Respite

8

Planning Services

Planning Services

- Advance Directives
- Financial Planning
- Real Estate



- ▶ **Advanced directives:** Written statement of a person's wishes regarding medical treatment including power of attorney for health care documents
- ▶ **Financial planning:** Long-term financial planning is important for the security of the caregiver and the person with chronic illness
- ▶ **Real estate:** meeting with a real estate agent can help you determine the value of your home and how to get the most out of that investment

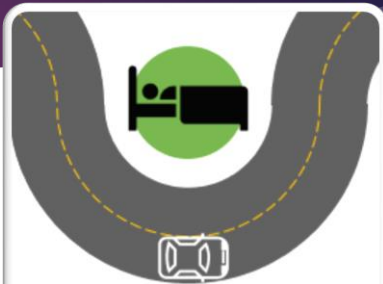




9

Skilled Nursing Home

- ▶ **Acute rehabilitation:** intended for short term rehab for patients following an acute illness or injury with intention for recovery.
- ▶ **Long term care:** seek to provide a permanent home for elderly people in need of skilled care.



Skilled Nursing Home

- Rehab Center
- Skilled Nursing Facility

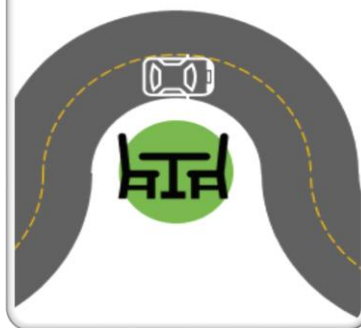
10

Assisted Living

- ▶ Assisted living is often used as an umbrella term for these different housing options noted
- ▶ Senior housing: typically independent in nature, may have housekeeping options and possibly congregate dining options as well. Can be subsidized
- ▶ Adult family homes
- ▶ Residential care apartment complex (RCAC)
- ▶ Community based residential facility (CBRF)
- ▶ Memory care: units specialized in providing care for those with memory impairment

Assisted Living

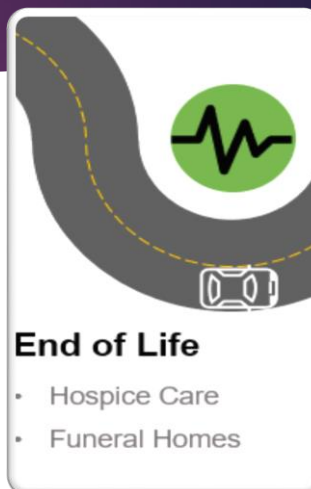
- Senior Housing
- Assisted Living Facility
- CBRF/ Memory Care



11

End of Life

- ▶ Hospice: a specialized type of care for those facing a life-limiting illness, support for patient, family, and caregiver(s).
- ▶ Funeral planning: help establish the location, dates, and times of wakes, memorial services, and burials



End of Life

- Hospice Care
- Funeral Homes

12

Helpful Resources

- How to find your local adrc in Wisconsin
 - <https://www.dhs.wisconsin.gov/adrc/consumer/index.htm>
- How to find nursing homes including rehab services
 - <https://www.medicare.gov/nursinghomecompare/search.html?>
- Finding & choosing an adult family home
 - <https://www.dhs.wisconsin.gov/guide/afh.htm>
- Finding & choosing a Residential care apartment complex
 - <https://www.dhs.wisconsin.gov/guide/rcac.htm>
- Finding & Choosing a community based residential facility
 - <https://www.dhs.wisconsin.gov/guide/cbrf.htm>
- How to choose an assisted living facility
 - <https://www.dhs.wisconsin.gov/publications/p6/p60579.pdf>

13



14