

Coffee and a Chat



Open to the public

No Cost Lunch provided

Location:

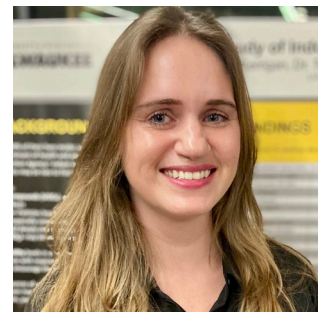
Ebenezer Ministry & Family
Worship Center
3132 N. Dr. MLK Drive,
Milwaukee, WI 53212

Coffee and a Chat is back! We invite you to enjoy chatting with friends and local experts while learning about important health topics. Attendees will hear a presentation from the speaker & afterwards a lunch will be provided. All sessions open to the public. Join us for an empowering discussion about social isolation and loneliness—issues that affect our health more than you might think!

Understanding Social Isolation and Loneliness: Learn About Milwaukee County's New Project

Thursday, Nov. 14, 2024
10:30 a.m.–Noon

Social isolation and loneliness impacts our health, happiness and daily lives. We'll explore the risk factors that contribute to feelings of disconnection and learn about local efforts to combat social isolation and loneliness. Following the talk, stick around to create seasonal greeting cards. Don't miss this opportunity to engage, educate, and empower yourself and your community.



Speaker:
Kaisa Kerrigan, MPH
Community Health
Coordinator
Milwaukee County
Department of Health &
Human Services

Registration Requested

To register, please contact Gail Morgan, Outreach Specialist, WAI Regional Milwaukee Office. Call (414) 219-5124 or Email gdmorgan3@wisc.edu



Wisconsin Alzheimer's Institute
UNIVERSITY OF WISCONSIN
SCHOOL OF MEDICINE AND PUBLIC HEALTH
Regional Milwaukee Office



MILWAUKEE COUNTY
DEPARTMENT OF HEALTH
& HUMAN SERVICES
**AGING & DISABILITIES
SERVICES**