

Dementia Diagnostic Clinic Network Spring WebEx Meeting

May 16, 2020

Welcome

- We will begin shortly; starting with a quick tutorial of the WebEx participant Navigation Menu.
- Please **mute your microphone** at this time. We have temporarily turned off attendees' cameras.
- Questions or issues
 - Use the *chat text box (chat panel)* or text Jody at (262) 968-2848
- After the meeting, participants will be emailed an evaluation link
- Rollcall will be done alphabetically by Network Clinic

Dementia Diagnostic Clinic Network Spring Meeting is jointly provided by:



1

Bottom Navigation Menu

Find the bottom Navigation Menu

This menu hides at the bottom of your screen, move your cursor-mouse down to bottom of the screen and menu will appear. It looks like this:



You will not have record button –only host has.

This meeting is being recorded.

2

Bottom Navigation Menu

Microphone (mic): Red is off, Black is on.
Turn on-and-off by pressing it with your cursor. Please keep your mic **off** when you are **not talking**.

Chat Bubble: blue is on, the panel usually shows up on the **bottom right side** of your screen. You can type comments and questions in the **chat text box**. You can select a specific person, or it will be displayed for the entire group to see.



Camera: this is your camera. **Red is off, Black is on.** Turn on-and-off by pressing it with your cursor.

Share Content: typically used by presenter

Participant Panel: **blue is on**, the panel usually shows up on the right side of the screen. It will list everyone attending the meeting.

... More Options: you can check your audio connection, microphone, and camera. The notes function is also in here.

3

Agenda

- 9:00 a.m. Welcome and Attendee Rollcall
Cindy Carlsson, MD, MS
- 9:15 a.m. Clinic Network Progress and Updates
Cindy Carlsson, MD, MS
- 9:25 a.m. Clinic Network Analysis
Maria Mora Pinzon, MD, MS
- 9:45 a.m. Tips to Assist Stay Home Family Caregivers
Becky DeBuhr; Alzheimer's & Dementia Alliance of Wisconsin
Sharlene Bellefeuille; Alzheimer's Association – Wisconsin Chapter
- 10:15 a.m. Updates on the Wisconsin Registry for Alzheimer's Prevention (WRAP) and Alzheimer's Disease Research Center (ADRC)
Sterling Johnson, PhD and Bonnie Nuttkinson
- 11:00 a.m. Closing Remarks
Cindy Carlsson, MD, MS

Questions or issues: use the Chat Text Box or text (262) 968-2848

4

Learning Objectives

- Review Clinic Network's progress and updates.
- Provide an overview of the 2020 Spring Clinic Network Analysis report.
- Learn strategies to assist stay home caregivers during the COVID-19 pandemic.
- Provide an update on the Wisconsin Registry for Alzheimer's Prevention (WRAP) and Alzheimer's Disease Research Center (ADRC).
- Identify the three ways to refer patients to research.
- Discuss tips for sharing research information with patients.


Questions or issues: use the Chat Text Box or text (262) 968-2848

5

*New Network Clinic

Attendee Rollcall

1. Aspiirus Memory Clinic
2. Aurora Two Rivers Memory Assessment Clinic
3. Center for Senior Health and Longevity – *Amanda Amon-Brellenthin, Ariba Khan, Rick London*
4. Center for Senior Health and Longevity - Summit
5. Door County Memory Care – *Paul Board, Hannah Craanen, Kim Kavanagh, Carol Shabbit, Deb Whitelaw Gorski, Christy Wisniewski*
6. Essentia Health - Ashland Memory Clinic – *Kim Ogle*
7. Froedtert and Medical College of WI Geriatrics Memory Disorders Clinic – *Sue Moser*
8. Froedtert and Medical College of WI Neurology Memory Disorders Clinic – *Piero Antuono, Elizabeth Daly, Ruth Fuentes, Casey Pollick, Sue Moser*
9. Froedtert and Medical College of WI Geriatric Psychiatry Clinic – *Sue Moser*


Wisconsin Alzheimer's Institute
UNIVERSITY OF WISCONSIN
SCHOOL OF MEDICINE AND PUBLIC HEALTH


Questions or Issues: use the Chat Text Box or text (262) 968-2848

6

*New Network Clinic

Attendee Rollcall

10. Geriatric Assessment Center
11. Green Bay Veterans Administration Health Care Center
12. Lakeshore Memory Clinic – *Cameron Goetz, Connie Thimmig*
13. Madison VA Memory Assessment Clinic – *Cindy Carlsson, Carey Gleason*
14. Marshfield Clinic Memory Disorders Clinic - Eau Claire
15. Marshfield Clinic Minocqua Center – *Colette Zunk*
16. Mayo Clinic Health System Dementia Program – *Courtney McAlister*
17. Mayo Clinic Health System Memory Care Clinic – *Donn Dexter, Michele Ries*
18. Mile Bluff Memory Assessment Clinic* – *Cris Custer, Leon Radant, Nancy Thacker*
19. Milwaukee Health Services Memory Clinic – *Stephanie Houston, Teresa Skora, Carla Wright*


Wisconsin Alzheimer's Institute
UNIVERSITY OF WISCONSIN
SCHOOL OF MEDICINE AND PUBLIC HEALTH


Questions or Issues: use the Chat Text Box or text (262) 968-2848

7

*New Network Clinic

Attendee Rollcall

20. MIND Clinic (Gundersen Memory Center) – *Barb Omit-Dorshorst, Melissa Schultze*
21. Monroe Clinic Memory Center
22. Mosaic Family Health - Fox Valley Family Medicine
23. Northern Wisconsin Memory Diagnostic Clinic – *Jasmine Baker, Chris Koeppl, Joelle Millikin, Carley Reynolds, Michelle Watz*
24. Preva Eau Claire Family Medicine Clinic
25. Prevea Health Clinic
26. Prohealth Care Senior Health Center
27. Richland Area Geriatric Assessment Clinic – *Becky DeBuhr, Philomena Poole, Robert Smith*
28. Richland Area Geriatric Assessment Clinic-Reedsburg – *Philomena Poole, Robert Smith*


Wisconsin Alzheimer's Institute
UNIVERSITY OF WISCONSIN
SCHOOL OF MEDICINE AND PUBLIC HEALTH


Questions or Issues: use the Chat Text Box or text (262) 968-2848

8

*New Network Clinic

Attendee Rollcall

29. Senior Memory Assessment Center – *Pam McMurray*
30. Senior Memory Assessment Center - St. Anne's – *Pam McMurray*
31. Southwest Health Center Memory Diagnostic Clinic – *Jennifer Miller Kass*
32. Spooner Health Memory Clinic – *Mark Van Etten*
33. St. Croix Regional Medical Center Memory Clinic* – *Laurie Byrnes, Colleen Erb*
34. The Memory Care Center – *Julie Feil, Lisa Kokontis*
35. UCC Latino Geriatric Center – *Vanessa Anciani, Piero Antuono, Ana Bernal, Al Castro*
36. UW Health East Clinic – *Victoria Williams*
37. UW Health Hospital and Clinics Memory Assessment Clinic – *Mary Kerwin*
38. UW Health Neurology Memory Clinic


Wisconsin Alzheimer's Institute
UNIVERSITY OF WISCONSIN
SCHOOL OF MEDICINE AND PUBLIC HEALTH

Questions or Issues: use the Chat Text Box or text (262) 968-2848


9

*New Network Clinic

Attendee Rollcall

39. UW Health Neurology Memory Clinic - 20 S Park Clinic
40. UW Health Specialty Clinic - Sauk Prairie – *Alexis Eastman*

Advocate Memory Center – Darren Gitelman
Alzheimer's Association Wisconsin Chapter – Sharlene Bellefeuille
Wisconsin Alzheimer Disease Research Center – DeRae Coughlin, Anne Fischer
Wisconsin Alzheimer's Institute – Donna Cole, Sterling Johnson, Tammy LeCaire, Maria Mora Pinzon, Bonnie Nuttkinson



Wisconsin Alzheimer's Institute
UNIVERSITY OF WISCONSIN
SCHOOL OF MEDICINE AND PUBLIC HEALTH


Questions or Issues: use the Chat Text Box or text (262) 968-2848

10

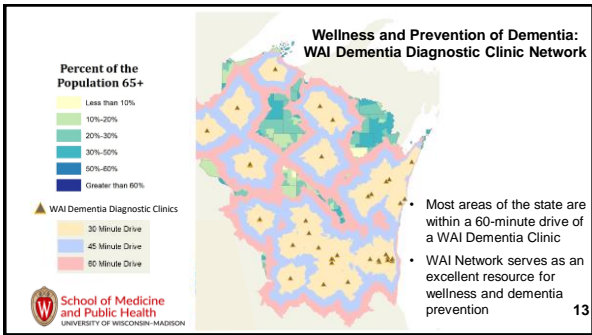
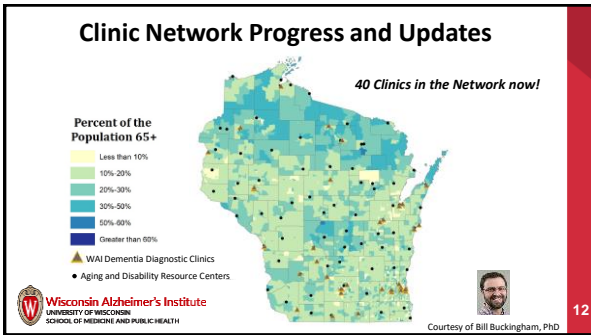
New Adventures in the Next Year

- Sue Moser, MSW, LCSW
 - Froedtert and Medical College of WI's Geriatrics Memory Disorders Clinic, Neurology Memory Disorders Clinic, and Geriatric Psychiatry Clinic
- Rick Redding, MD
 - Aspiirus Memory Clinic
- Others?




Wisconsin Alzheimer's Institute
UNIVERSITY OF WISCONSIN
SCHOOL OF MEDICINE AND PUBLIC HEALTH

11



- ### Clinic Network Progress and Updates
- WAI is applying for a CDC BOLD Public Health Centers of Excellence in Early Detection of Dementia this month
 - 3 Centers nationwide will be funded – one on Early Detection, one on Dementia Caregiving, and one on Dementia Prevention
 - Focused on gathering and disseminating best practices nationwide
 - Goals of the grant:
 - Increased access to topic-specific tools and materials for use by states, local, and tribal public health agencies and other partners for implementing Healthy Brain Initiative Road Map actions.
 - Increased use of topic specific best practices and proven strategies by states, local, and tribal public health agencies and other partners for those at risk for or diagnosed with cognitive decline or dementia and their caregivers.
- <https://www.cdc.gov/aging/healthybrain/roadmap.htm>
- Wisconsin Alzheimer's Institute
UNIVERSITY OF WISCONSIN
SCHOOL OF MEDICINE AND PUBLIC HEALTH
- Questions or issues: use the Chat Text Box or text (262) 968-2848
- 14

- ### Clinic Network Progress and Updates
- COVID-19 pandemic is presenting new challenges for outreach to patients with dementia and caregivers
 - Growth of telemedicine, video-medicine, and novel ways to reach patients
 - Additional temporary services added to Medicare telehealth services
<https://www.cms.gov/Medicare/Medicare-General-Information/Telehealth/Telehealth-Codes>
- Wisconsin Alzheimer's Institute
UNIVERSITY OF WISCONSIN
SCHOOL OF MEDICINE AND PUBLIC HEALTH
- Questions or issues: use the Chat Text Box or text (262) 968-2848
- 15

Clinic Network Progress and Updates

- National Institute on Aging's Alzheimer's Disease Research Centers program is developing telephone cognitive battery (will be available in Spanish)

Table 3. Core Tests + Optional Tests for the UDSv3 cognitive battery (or telephone)
Blind/Telephone MoCA
Craft Story – Immediate Recall
Rey Auditory Verbal Learning Test – Immediate Recall (RAVLT) or other word list learning test
Number Span – Forward & Backward
Oral Trail Making Test
Craft Story – Delay Recall
Category Fluency (A&V)
Verbal Fluency (F&L)
Geriatric Depression Scale (GDS)
Rey Auditory Verbal Learning Test – Delay Recall & Recognition
Visual Naming Test

Wisconsin Alzheimer's Institute
UNIVERSITY OF WISCONSIN
SCHOOL OF MEDICINE AND PUBLIC HEALTH

Questions or issues: use the Chat Text Box or text (262) 968-2848

16

- ### Collective Input
- How have your clinics been managing remote memory assessment visits?
 - What has worked well?
 - What have been the greatest challenges?
- Wisconsin Alzheimer's Institute
UNIVERSITY OF WISCONSIN
SCHOOL OF MEDICINE AND PUBLIC HEALTH
- 17

Clinic Network Analysis

The Network Report now includes a comparison between the network's performance in some quality measures and national averages based on CMS benchmarks. (See first page of report for more information)

New on This Report

CMS has included the following dementia-related measures in the Merit-Based Incentive Payment Program for Medicare cognitive assessment, management of neurodegenerative symptoms, education and referral of caregivers, driving and safety screening.

CMS uses quality measures in its quality improvement, public reporting, and pay-for-reporting programs for specific healthcare providers. You can explore the definitions and explanation of these measures here: <https://www.cms.gov/medicare/merit-based-incentive-payment-program>

Starting on this report we have included the benchmarks established by CMS MIPS for each measure for the current year. These benchmarks change on a yearly basis based on new information. To match the CMS reporting we updated our method of analysis, which now includes two metrics: Data completeness & Data performance. We also re-analyzed data submitted in previous cycles to match the new counting procedures. The following graph shows how the information presented in the report.

Questions or issues: use the Chat Text Box or text (262) 968-2848 18

Quality measures caveats:

These measures are designed to be done for each patient over a 12-month period, therefore, our measurements are just a reflection of a single point in time, and DO NOT reflect care provided in subsequent visits. This might explain lower performance than CMS in certain aspects.

Quality Measure 2: Education & Support of Caregivers
2020 CMS MIPS — Quality Measure 288

Data Completeness: 72.8%

Questions or issues: use the Chat Text Box or text (262) 968-2848 19

What have we done with the data?

Besides providing each clinic with a report, we are preparing two manuscripts describing the following:

1. Implementation of the quality measures: how we collect data and lessons learned.
2. Are there differences in data submission according to rurality? This would help us to identify specific strategies according to location.

More information will be sent around as these are finalized.

Questions or issues: use the Chat Text Box or text (262) 968-2848 20

Clinic Network Analysis

How can you help?

Please complete the survey related to the quality measures, it will provide valuable information on their usefulness, and opportunities for implementation.

What if I have questions on how to fill out the form?
Check the codebook first, if the question remains ask Jody Krainer.

What if I have questions about my clinic's report?
Email Dr. Mora Pinzon mmora2@wisc.edu

Questions or issues: use the Chat Text Box or text (262) 968-2848 21

Tips to Assist Stay Home Caregivers

- The most requested assistance by caregivers during COVID-19
- Unique issues caregivers are experiencing due to COVID-19
- Use of online/virtual services
- Gaps in services/resources at this time
- The best place a caregiver can start if they don't know where to start
- Tips on how the clinician can facilitate a caregiver engaging in online/virtual support

Questions or issues: use the Chat Text Box or text (262) 968-2848 22

Alzheimer's & Dementia Alliance of Wisconsin

Adams & Juneau Co. Office (Oshkosh)

Crawford, Grant, Iowa, Lafayette & Richard Co. Office (Lancaster)

Columbia & Sauk Co. Office (Plymouth)

Dane Co. Office (Madison)

Green & Rock Co. Office (Beloit)

Green Lake, Marquette & Waushara Co. Office (Green Lake)

Alzheimer's & Dementia Alliance
alz-wisc.org • 888.308.6251

Becky DeBuhr 23

Alzheimer's Association

COVID-19 Response: We are still here for you!

- Staff and Volunteers **working remotely** providing programs and services virtually
 - **Direct Connect Referral Program:** HIPAA compliant and easy way to connect patients and families to local Care & Support Services
 - **Care Consultation Services:** available as often as needed to help families navigate dementia care concerns plus added barriers due to COVID-19 Safer-at-Home Guidelines
 - **Virtual Support Groups:** available via video conferencing or by telephone (new support groups added for families who have loved ones living in facilities)
 - **Virtual Education Programs:** Adding more offerings every week for live webinar based trainings
 - Online education, caregiver forums, message boards, and care planning tools available on our website, alz.org
 - **24/7 Helpline:** Continues as usual for support day or night (800.272.3900)
- Questions? Sharlene Bellefeuille, Community Outreach Coordinator at shellbeff@alz.org or 715.861.6174, Jennifer McAlister, Program Manager at jmcAlister@alz.org or 414.479.8800 ext. 1939.

Sharlene Bellefeuille

alzheimer's association

24

Group Discussion: Tips to Assist Stay Home Caregivers

- Your experience with caregivers using online/virtual services.
- What has worked well, what hasn't?
- Thoughts on ways to improve our collaborative efforts regarding caregivers and patients.

Questions or issues: use the Chat Text Box or text (262) 968-2848

25

Updates on the Wisconsin Registry for Alzheimer's Prevention (WRAP) and the Wisconsin Alzheimer's Disease Research Center (ADRC)



Sterling Johnson, PhD

Wisconsin Alzheimer's Institute
UNIVERSITY OF WISCONSIN
SCHOOL OF MEDICINE AND PUBLIC HEALTH

Questions or issues: use the Chat Text Box or text (262) 968-2848

26

E-Newsletter: Updates in Dementia Care

Expectations and commitment:

- Attend one virtual editorial planning meeting each year (2 hours/year)
- Contribute ideas and interact with the editor in preparation of four annual editions (8 hours/year)
- Two-year commitment to the advisory board
- Editorial advisory board members will be featured on the e-newsletter website



If interested:

- Email updatesindementiacare@medicine.wisc.edu
- Send Bonnie or Jody a chat message through WebEx

27

New Provider Page on Website

- <https://www.adrc.wisc.edu/referring-patients-research>



28

Three Ways to Refer

- **Email** - Include the following information in an email to adrcreferrals@medicine.wisc.edu:
 - Patient info
 - Name
 - Diagnosis
 - Phone number
 - Email address
 - Alternate contact
 - Name
 - Phone number
 - Relationship to patient
- **Secure Online Form**
 - Send us patient information using an [online form](#).
- **Fax**
 - Include the following documents in a fax to (608) 265-3091
 - [Clinic Referral Form](#)
 - [Authorization for Release of Information](#)

29

Tips for Sharing Research Info with Patients

- Add a research link in the patient after visit summary
 - <https://www.adrc.wisc.edu/volunteer-study>
- Post research flyers in your clinic waiting area or exam rooms
 - if policy permits.
- Keep Wisconsin ADRC referral cards in the exam rooms
 - if policy permits.
- Keep Wisconsin ADRC referral card near the phone as a reminder to discuss research opportunities with your patients
 - if/when you deem appropriate.



30

ADRC Outreach Specialist

To make a referral or ask questions contact:



Susie Fernandez
sfernandez@medicine.wisc.edu
(608) 265-0548



Bonnie Nuttkinson
bnuttkin@medicine.wisc.edu
(608) 265-0407



31

Closing Remarks

*Mark your calendars for the
18th Annual Update in Alzheimer's Disease and Related Dementias*

- **Building Applied Skills in Dementia Care** – Thursday, November 5, 2020
- **The 18th Annual Alzheimer's Disease Update** – Friday, November 6, 2020
- **The Fall Clinic Network Meeting** – Saturday, November 7, 2020

All participants will be emailed an evaluation link after today's meeting.
Please help us out by providing feedback about the inaugural virtual meeting.



32